

General Ledger



The General Ledger is a complete module for processing transactions. It delivers enhanced inquiry flexibility, powerful analysis tools, and robust reporting options you need to maintain strict budgeting and financial performance tracking.

This module informs you accurately on realized profits and enables you to quickly measure which profit centers are the most profitable.

FEATURES AT A GLANCE

- Allows 6-digit General Ledger account number
- Lets you modify the General Ledger account number without altering related data
- Offers a flexible year-end procedure
- Allows you to view an account balance detail directly from the Account maintenance screen
- Allows you to view transactions details from a closed fiscal year
- Calculates realized and unrealized profit/loss on multi-currency transactions
- Adjusts financial statements according to inventory actual value
- Manages profit centers
- Saves recurrent transactions
- Keeps track of previous year budgets and allows budget transfer to current fiscal year

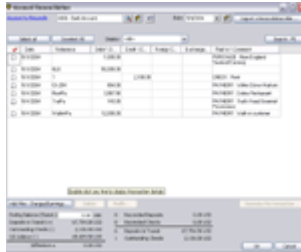
ACCOUNT RECONCILIATION

- Allows you to save a current bank reconciliation without completing it
- Allows transfer funds
- Groups payment receipts by payment method

REPORTS AVAILABLE

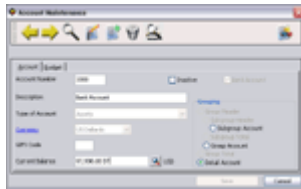
- Balance Sheet – Comparative
- Trial Balance – Summary and detail
- Income Statements - Comparative – By budget, Job Cost
- Tax Report
- Realized and Unrealized Exchange Profit/Loss
- Bank Account List

SCREENSHOTS



Bank Reconciliation

It takes just a few minutes to reconcile your accounts, or save the bank reconciliation without completing it to finalize the procedure later.



Account Maintenance

The Platinum solution offers you the possibility to add 2 figures to your General Ledger account numbers, thus providing more latitude when you need to create new accounts.



Balance sheet

Get a clear picture of your financial reality.